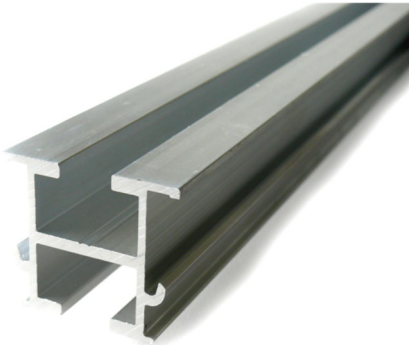


# Product Data Sheet

Order No. 9730 - 9740

## Solar Mounting Profile SMP 38/33 with Accessory



### Technical Data

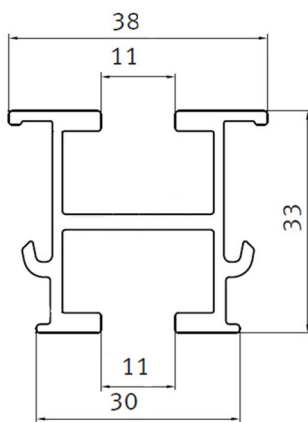
#### Solar Mounting Profile 38/33

Order No. 9730

Made of extruded aluminium, natural AlMgSi0,5 F25 mill-finish, with profile channel both on the upper and the bottom side.

Length:	ca. 6.000 mm
Width:	ca. 38 mm
Height:	ca. 33 mm
Weight:	ca. 0.75 kg/m

### Further Technical Data on Solar Mounting Profile SMP 38/33

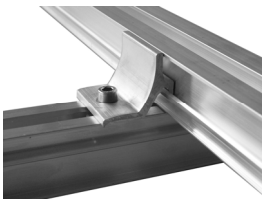


Section properties				
A [cm <sup>2</sup> ]	I <sub>y</sub> [cm <sup>4</sup> ]	I <sub>z</sub> [cm <sup>4</sup> ]	W <sub>y</sub> [cm <sup>3</sup> ]	W <sub>z</sub> [cm <sup>3</sup> ]
2.86	3.34	3.62	1.99	1.88

**Order No. 9731**  
Coupling Profile  
KP 40/40, Length:  
ca. 6m



**Order No. 9732**  
Cross connector;  
including screw  
and threaded plate  
M8



**Order No. 9733**  
Connector for  
length compensa-  
tion including  
fastening devices



**Order No. 9734**  
Fastening set consisting  
of hammer-head bolt  
and locking nut, packing  
unit with 50 pieces



### Required Accessories

Hammer-head bolts and M10 locking nuts (Order No. 9734) are required to attach the Solar Mounting Profiles to the Solar Base Frame.

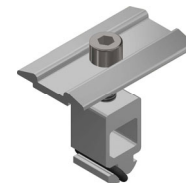
The joints of the SMP 38/33 can be connected using four-hole profile connectors (Order No. 9735). In order to allow for thermal expansion of the aluminium profiles, 15 mm wide expansion joints need to be formed every 12 -18 m. Special length compensation connectors (Order No. 9733) which are only screwed on one side, can be applied for this purpose.

Framed photovoltaic modules can be attached to the SMP 38/33 using variable middle clamps (Order No. 9739) respectively end clamps (Order No. 9740).

In special cases it might be useful to couple Solar Mounting Profiles, which is easily possible using Coupling Profile KP 40/40, Cross Connectors and Stainless Steel Angles.



**Order No. 9735**  
Four-hole profile  
connector; made of  
flat material 30 x 6  
mm, including 4  
screws and 4  
locking nuts



**Order No. 9739**  
Pre-assembled  
middle clamp;  
variable height  
30 to 40 mm



**Order No. 9740**  
Pre-assembled  
end clamp;  
variable height  
30 to 40 mm



**Order No. 9738**  
Stainless Steel Angle  
for KP 40/40,  
incl. Hammer Head  
Bolt M8 x 20, Unit  
of 20 pieces