

# INNOVATING WITH NATURE

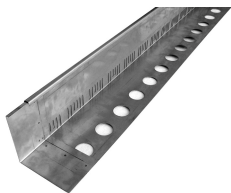
## Sloped Green Roof

25° - 45° slope

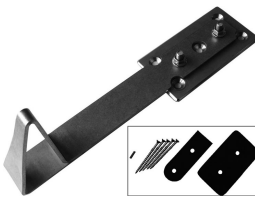
With sloped green roofs the shear forces increase and have to be transferred into the roof construction. Also the growing medium has to be protected against erosion. For that reason is important to use a secure and engineered approach to keep the green roof in place also in the long term.

## GEORASTER

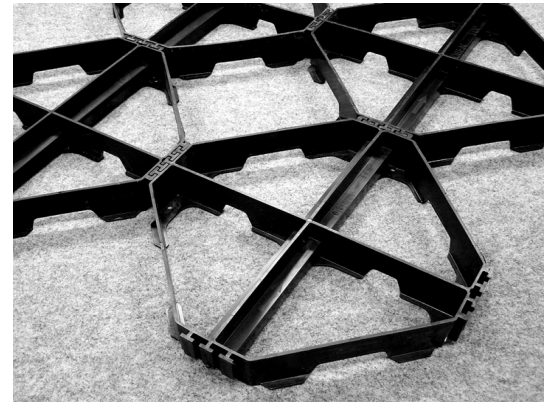
The ZinCo Georaster® elements provide roofs which have a gradient of over 25° with a safe and long-lasting landscaping solution with effective force-relief. Thanks to their small size, they leave a relatively large area, which is suitable for rooted plants. The choice of plants must, of course, fit the extreme location.



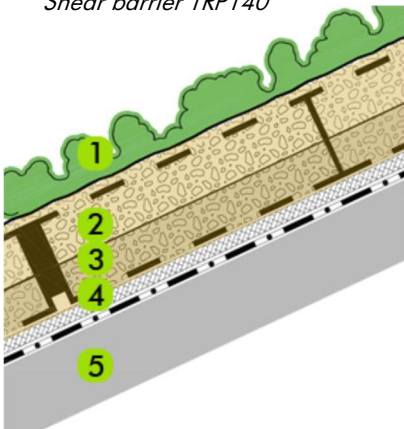
Shear barrier TRP140



Support Bracket L-F300



Georaster®



1. Plant Material
2. Growing Medium ZinCoblend-E  
Depth: 110 mm
3. ZinCo Georaster® FS75
4. ZinCo Moisture Mat WSM150
5. Roof Construction with root protected Waterproofing Membrane

## Planting Options:



Plug Plants



Pre-grown vegetation mat



## Features:

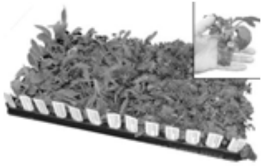
- Engineered and secure soil retention
- Minimum maintenance
- Simple irrigation recommended
- Planting: low growing sedum
- Fast and easy installation
- Can be installed in double layer

Slope: 25 - 45 degrees  
Saturated weight: 145 kg/m<sup>2</sup> (30 psf)  
Height: 120 mm (5")  
Retention capacity: 57 L/m<sup>2</sup>

# INNOVATING WITH NATURE

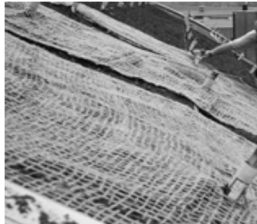
## Sloped Green Roof

For gradients up to 45 degrees



**Special plants for extensive green roofs.** Available species: sedums, grasses and drought resistant perennials. For information about plant lists and availability please contact us at: 905-690-1661 or e-mail: [greenroof@zinco.ca](mailto:greenroof@zinco.ca)

Product	Art. Nr.	Size of Delivery
Plug plants tray of 50	8200	Plug
Plug plants tray of 72	8201	Plug
Pre-grown vegetation mat	8030	Approx. 1,0 x 2,00 m mats



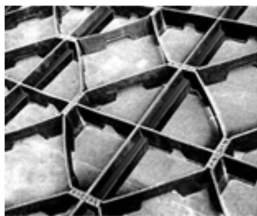
**ZinCo anti-erosion mesh JEG** made of 100% jute. Special designed for sloped application and wind up-lift. Biodegradable. Weight: approx. 500 g/m<sup>2</sup>. Mesh size: 3 cm x 4 cm.

Product	Art. Nr.	Size of Delivery
Jute Mesh JEG	2856	Approx. 1.22 m x 70.00 m roll



**Growing medium for extensive Green Roofs ZinCoblend –E** are produced using recycled materials and minerals, enriched with high quality compost elements, resistant to flying sparks, frost-resistant, stable structure. Special engineered by ZinCo Canada and meets the FLL-standards for Planning, Execution and Upkeep of Green Roof sites.

Product	Art. Nr.	Size of Delivery
ZinCoblend-E - Bulk	6100	Per cubic meter
ZinCoblend-E - Big Bag	6110	Per cubic meter



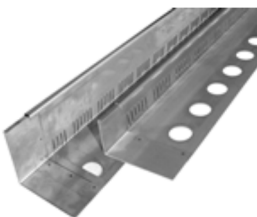
**ZinCo Georaster** element for steep sloped extensive green roofs. Made of polyethylene (HD-PE) including reinforced T-profile in the middle to provide a secure hold for the growing medium against water and wind erosion. Height 100 mm. Weight: approx. 1.8 kg/piece. Quantity: 2.56 pc/m<sup>2</sup>. Dimensions: 540 mm x 540 mm

Product	Art. Nr.	Size of Delivery
Georaster ®	3400	Approx. 0.54 x 0.54 m element



**ZinCo moisture and protection mat WSM 150** made of non-rotting fibers, penetration resistant, for water- and nutrient retention as well as protection layer. Designed for sloped Green Roofs. Thickness: 20 mm. Weight approx. 1500 g/m<sup>2</sup>. Water retention capacity: 12 l/m<sup>2</sup>. Bitumen resistant - Biologically and chemically neutral.

Product	Art. Nr.	Size of Delivery
WSM 150	2015	Approx. 1.00 m x 15.00 m roll



**ZinCo heavy duty eaves profile TRP 80 (80 mm) or TRP 140 (140 mm)** made of stainless steel L-bracket. Designed as a profile for sloped roofing edges and as edging between pavement and green areas. Including vertical slots for drainage, openings for adhesion to the waterproofing membrane (with adhesive tape), and attached butt joints. Length: approx. 3 m.

Product	Art. Nr.	Size of Delivery
TRP 80 Stainless (80 mm)	7780	3 m length
TRP 140 Stainless (140 mm)	7782	3 m length
TSH 80 support bracket	9560	piece
TSH 100 support bracket	9565	piece
L300 shear barrier	9568	piece

# INNOVATING WITH NATURE

## Sloped Green Roof

25° - 45° slope

### Plant Suggestions:

Name:	Height:	Colour:	Zone:	Flower:
1. Sedum album	150 mm	green	4	white
2. Sedum album "Coral Carpet"	50 mm	green/red	4	white
3. Sedum album "Murale"	50 mm	green	4	white
4. Sedum floriferum "Weihenstephaner Gold"	100 mm	green	3	yellow
5. Sedum hybridum "Immergrunchen"	150 mm	red/green	4	yellow
6. Sedum hybridum "Czar's Gold"	150 mm	green	3	yellow
7. Sedum kamschaticum	100 mm	green	4	yellow
8. Sedum reflexum	150 mm	green/gray	3	yellow
9. Sedum rupestre "Angelina"	120 mm	yellow	4	yellow
10. Sedum rupestre "Blue Spruce"	150 mm	blue/gray	3	yellow
11. Sedum rupestre "Green Spruce"	150 mm	green	3	yellow
12. Sedum sexangular	100 mm	green	4	yellow
13. Sedum spurium album	150 mm	green	4	white
14. Sedum spurium "Fuldaglut"	150 mm	green/red	3	red
15. Sedum spurium "John Creech"	100 mm	green	3	pink
16. Sedum spurium "Roseum"	150 mm	green	4	pink
17. Sedum spurium "Voodoo"	100 mm	red	4	red



### ZinCo Canada Inc.

P.O. Box 29 · Carlisle · L0R 1H0 · Ontario  
 Phone 1-905-690-1661 · Fax 1-905-689-0432  
[greenroof@zinco.ca](mailto:greenroof@zinco.ca) · [www.zinco.ca](http://www.zinco.ca)



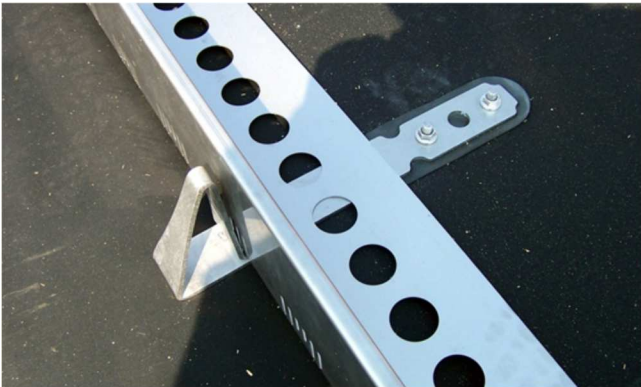
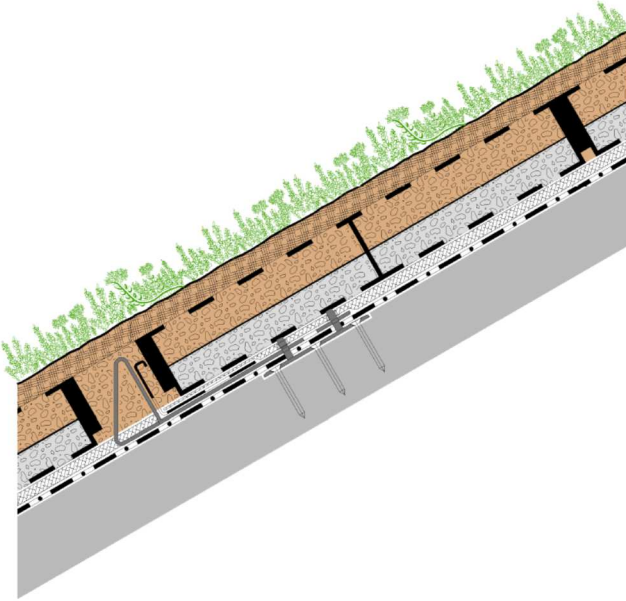
# INNOVATING WITH NATURE

## Sloped Green Roof

25° - 45°

### SHEAR BARRIERS

On sloped roofs the green roof assembly is creating shear forces which means that the entire assembly wants to slide to the lowest point of the roof. To counter these shear forces, barriers are required at the eaves of the roof and, based on the sloped and the length of the roof, at some locations in the middle of the roof. These barrier can be created using the steel L-profile ZinCo TRP 80 or TRP140 in combination with support brackets ZinCo Sheafix LF300.



*Shear barrier using ZinCo L-profile TRP80 or TRP140 in combination with ZinCo Shear bracket LF300*